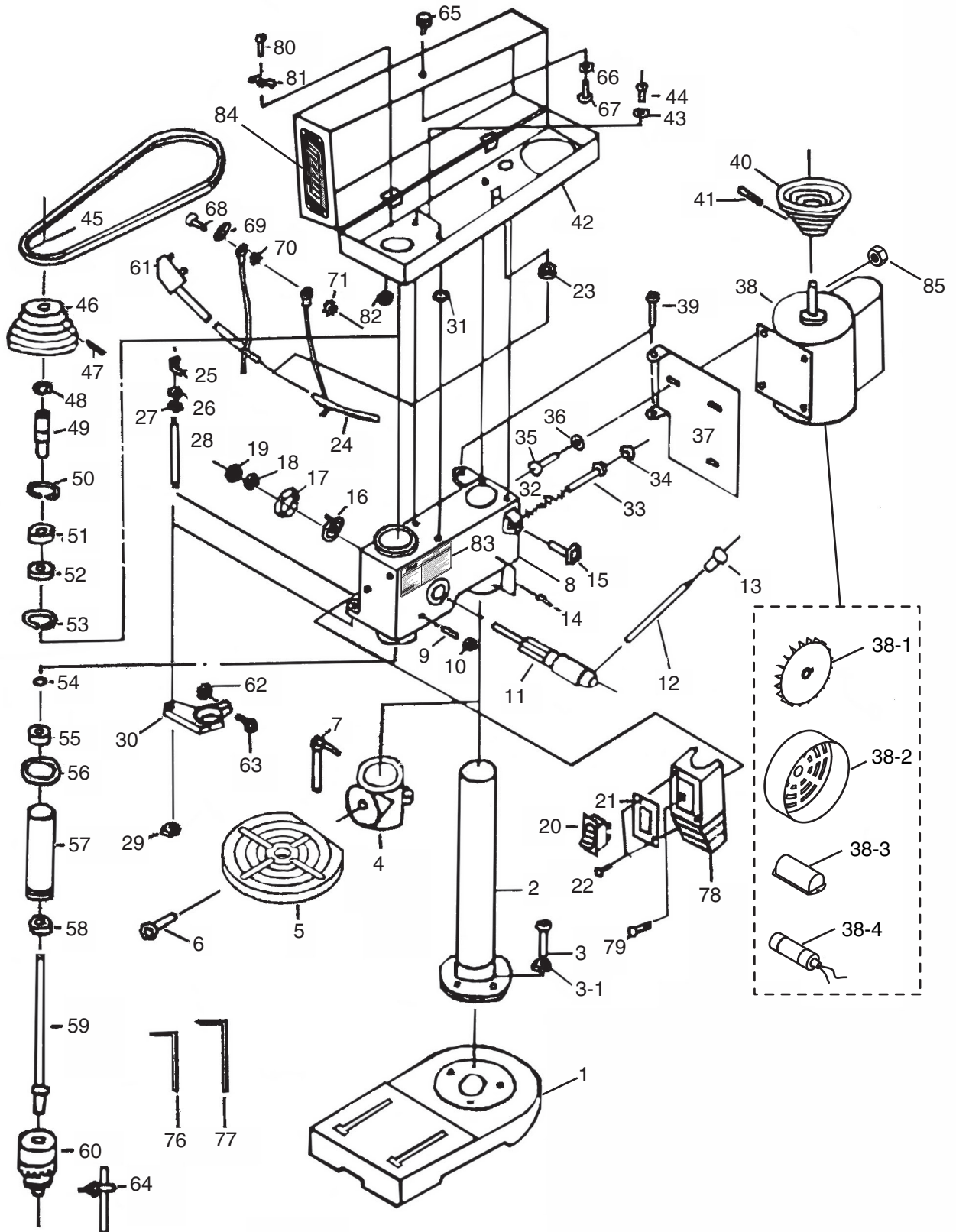


# G9986 Parts Breakdown



# G9986 Parts List

REF	PART #	DESCRIPTION
1	P9986001	BASE
2	P9986002	COLUMN
3	PB09M	HEX BOLT M8-1.25 X 20
3-1	PW01M	FLAT WASHER 8MM
4	P7942004	CLAMPING SLEEVE
5	P9986005	TABLE
6	PB25M	HEX BOLT M12-1.75 X 25
7	P9986007	CLAMPING LEVER
8	P9986008	BODY
9	P9986009	DOG POINT SET SCREW M6-1 X 18
10	PN01M	HEX NUT M6-1
11	P9986011	FEED SHAFT
12	P9986012	DOWNFEED HANDLE
13	P9986013	KNOB 3/8-16
14	P9986014	KNURLED CUP SET SCREW M8-1.25 X 10
15	P9986015	KNOB M8-1.25 X 16
16	P9986016	SPRING SEAT
17	P9986017	SPRING CAP
18	P9986018	JAM NUT M10-1
19	P9986018	JAM NUT M10-1
20	PSW06	SWITCH
21	P9986021	CLAMPING SHEET
22	PS02M	PHLP HD SCR M4-.7 X 12
23	P9986023	BUSHING
24	P9986024	WIRE
25	P9986025	POINTER
26	P9986018	JAM NUT M10-1
27	P9986018	JAM NUT M10-1
28	P9986028	LIMIT BOLT
29	PN01M	HEX NUT M6-1
30	P9986030	DEPTH STOP CLAMP
30A	P9986030A	DEPTH STOP GAUGE ASSY V2.10.02
31	P7942031	RUBBER WASHER
32	P9986032	COMPRESSION SPRING
33	P9986033	SLIDE BAR
34	P9986034	RUBBER PAD
35	PS26M	PHLP HD SCR M6-1 X 20
36	PW03M	FLAT WASHER 6MM
37	P9986037	MOTOR BASE
38	P9986038	MOTOR
38-1	P9986038-1	MOTOR FAN
38-2	P9986038-2	MOTOR FAN COVER
38-3	P9986038-3	CAPACITOR COVER
38-4	P9986038-4	CAPACITOR 24MFD 300VAC

REF	PART #	DESCRIPTION
39	PB03M	HEX BOLT M8-1.25 X 16
40	P9986040	MOTOR PULLEY
41	PSS01M	SET SCREW M6-1 x 10
42	P9986042	PULLEY COVER
43	PW03M	FLAT WASHER 6MM
44	PS68M	PHLP HD SCR M6-1 X 10
45	PVM27	V-BELT M27 3L270
46	P9986046	SPINDLE PULLEY
47	PSS01M	SET SCREW M6-1 X 10
48	PR10M	EXT RETAINING RING 22MM
49	P9986049	INTERNAL SPLINE SLEEVE
50	PR23M	INT RETAINING RING 40MM
51	P6203	BALL BEARING 6203ZZ
52	P6203	BALL BEARING 6203ZZ
53	PR23M	INT RETAINING RING 40MM
54	PR01M	EXT RETAINING RING 10MM
55	P6201	BALL BEARING 6201ZZ
56	P9986056	COLLAR
57	P9986057	QUILL
58	P6201	BALL BEARING 6201ZZ
59	P9986059	SPINDLE
60	P9986060	DRILL CHUCK 1-13MM JT33
61	P9986061	PLUG
62	PN01M	HEX NUT M6-1
63	PB10M	HEX BOLT M6-1 X 25
64	P9986064	DRILL CHUCK KEY
65	P9986065	HANDLE
66	PW02M	FLAT WASHER 5MM
67	PS08M	PHLP HD SCR M5-.8 x 12
68	PS07M	PHLP HD SCR M4-.7 X 8
69	P9986069	GROUNDING SYMBOL
70	PLW02M	LOCK WASHER 4MM
71	PW05M	FLAT WASHER 4MM
76	PAW03M	HEX WRENCH 3MM
77	PAW04M	HEX WRENCH 4MM
78	P9986078	SWITCH BOX
79	PS08M	PHLP HD SCR M5-.8 X 12
80	PS07M	PHLP HD SCR M4-.7 X 8
81	P9986081	WIRE CLAMPS
82	PN04M	HEX NUT M4-.7
83	P9986083	MACHINE ID LABEL
84	P9986084	GRIZZLY NAMEPLATE
85	PN01M	HEX NUT M6-1

## WARNING

Safety labels warn about machine hazards and ways to prevent injury. The owner of this machine **MUST** maintain the original location and readability of the labels on the machine. If any label is removed or becomes unreadable, **REPLACE** that label before using the machine again. Contact Grizzly at (800) 523-4777 or [www.grizzly.com](http://www.grizzly.com) to order new labels.

