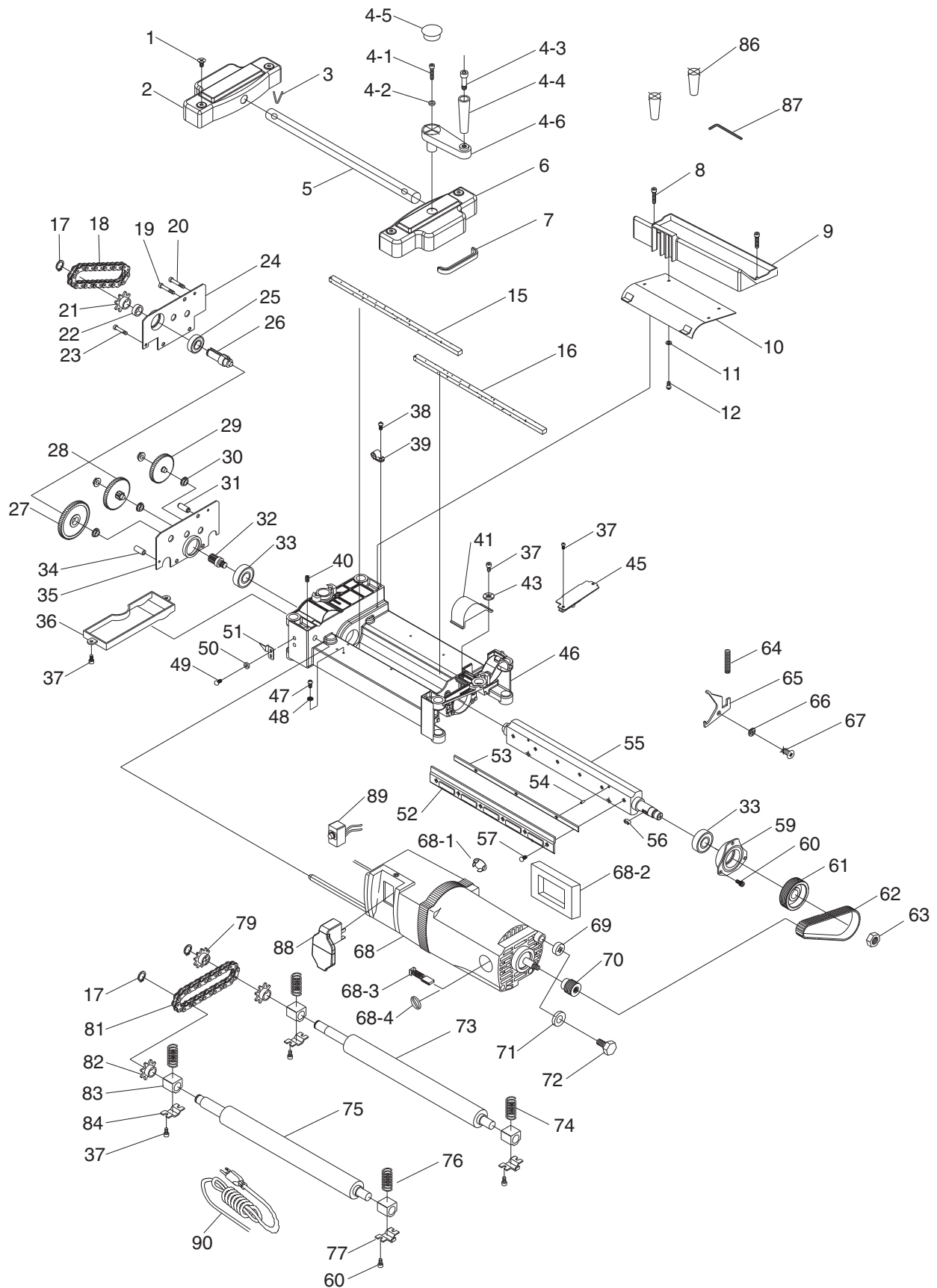


Cutterhead Case Breakdown



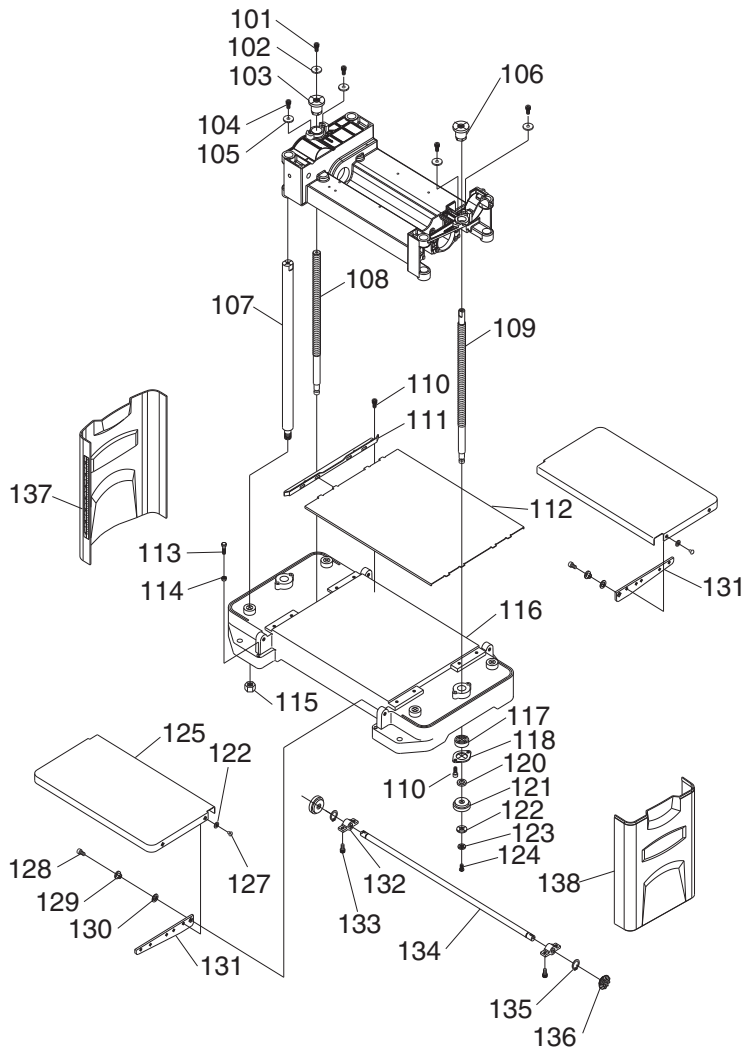
Cutterhead Case Parts List

REF	PART #	DESCRIPTION
1	PSBS03M	BUTTON HD CAP SCR M8-1.25 X 16
2	P0663002	LEFT CAP
3	P0663003	COTTER PIN 2.5MM X 32MM
4-1	PSB38M	CAP SCREW M5-.8 X 25
4-2	PLW01M	LOCK WASHER 5MM
4-3	PSB13M	CAP SCREW M8-1.25 X 30
4-4	P0663004-4	KNOB
4-5	P0663004-5	HANDLE CAP
4-6	P0663004-6	HANDLE
5	P0663005	ROLLER
6	P0663006	RIGHT CAP
7	P0663007	GRIP
8	PSB78M	CAP SCREW M5-.8 X 40
9	P0663009	DUST GUIDE
10	P0663010	DUST PLATE
11	PW02M	FLAT WASHER 5MM
12	PHTEK37M	TAP SCREW M5 X 12
15	P0663015	LOWER GASKET
16	P0663016	UPPER GASKET
17	PR05M	EXT RETAINING RING 15MM
18	P0663018	CHAIN
19	PSB79M	CAP SCREW M5-.8 X 35
20	PSB38M	CAP SCREW M5-.8 X 25
21	P0663021	SPROCKET
22	P0663022	SPACER
23	PSB95M	CAP SCREW M5-.8 X 30
24	P0663024	OUTSIDE COVER
25	P6002	BALL BEARING 6002ZZ
26	P0663026	SHAFT
27	P0663027	GEAR 70T
28	P0663028	DOUBLE GEAR 58T/12T
29	P0663029	DOUBLE GEAR 52T/12T
30	P0663030	BUSHING
31	P0663031	SPACER
32	P0663032	PINION
33	P6203	BALL BEARING 6203ZZ
34	P0663034	SPACER
35	P0663035	INSIDE COVER
36	P0663036	COVER
37	PSB50M	CAP SCREW M5-.8 X 10
38	PS09M	PHLP HD SCR M5-.8 X 10
39	P0663039	CORD CLAMP
40	PSS05M	SET SCREW M5-.8 X 10
41	P0663041	BELT GUARD
43	PWF05M	FENDER WASHER 5MM
45	P0663045	GUARD

REF	PART #	DESCRIPTION
46	P0663046	ROLLERCASE
47	PS05M	PHLP HD SCR M5-.8 X 8
48	PTLW02M	EXT TOOTH WASHER 5MM
49	PS07M	PHLP HD SCR M4-.7 X 8
50	PW05M	FLAT WASHER 4MM
51	P0663051	POINTER
52	P0663052	GIB
53	P0663053	KNIFE
54	P0663054	PIN
55	P0663055	CUTTERHEAD
56	P0663056	KEY
57	PSB115M	BUTTON HD CAP SCR M6-1 X 16
59	P0663059	BEARING RETAINER
60	PSB33M	CAP SCREW M5-.8 X 12
61	P0663061	CUTTERHEAD PULLEY
62	P0663062	BELT
63	P0663063	SPECIAL NUT
64	P0663064	SPRING
65	P0663065	CUTTERHEAD LOCK
66	P0663066	SPACER
67	PFH39M	FLAT HD SCR M5-.8 X 16
68	P0663068	MOTOR 1.5HP 110V 60HZ 1 PH
68-1	P0663068-1	HOLE PLUG
68-2	P0663068-2	PORT GASKET
68-3	P0663068-3	MOTOR BRUSH
68-4	P0663068-4	MOTOR BRUSH CAP
69	P0663069	SPACER
70	P0663070	MOTOR PULLEY
71	PW01M	FLAT WASHER 8MM
72	PB09M	HEX BOLT M8-1.25 X 20
73	P0663073	OUTFEED ROLLER
74	P0663074	SPRING OUTFEED
75	P0663075	INFEED ROLLER
76	P0663076	SPRING INFEED
77	P0663077	RETAINER RH
79	P0663079	SPROCKET
81	P0663081	CHAIN
82	P0663082	SPROCKET
83	P0663083	BEARING BLOCK
84	P0663084	RETAINER LH
86	P0663086	MAGNET
87	PAW04ML	HEX WRENCH 4MM 5-1/2 LONG
88	P0663088	ON/OFF SWITCH
89	P0663089	MOTOR OVERLOAD SWITCH
90	P0663090	POWER CORD



Planer Base Breakdown & List

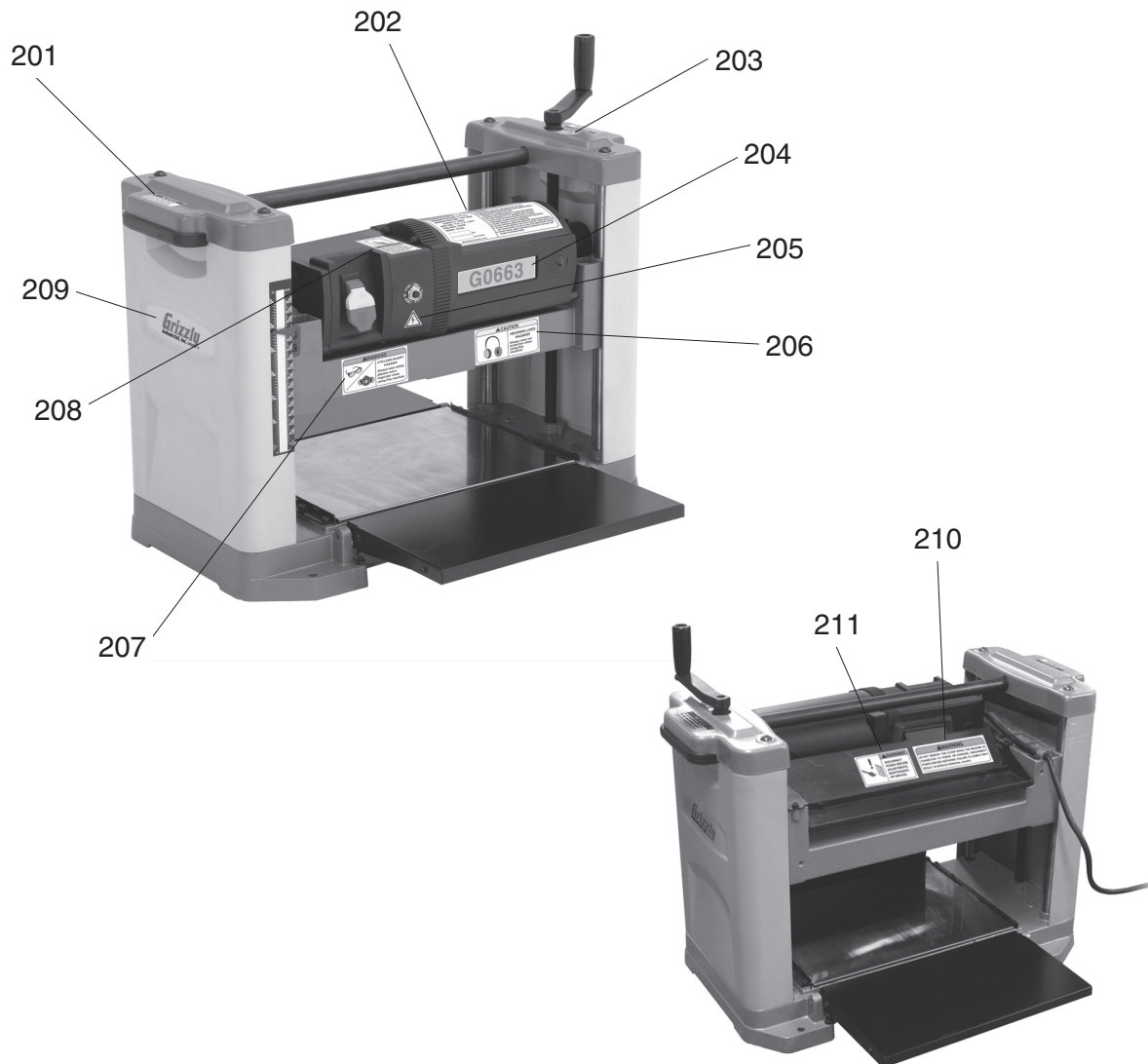


REF	PART #	DESCRIPTION
101	PSB33M	CAP SCREW M5-.8 X 12
102	PW02M	FLAT WASHER 5MM
103	P0663103	ELEVATING NUT LH
104	PSB01M	CAP SCREW M6-1 X 16
105	PW03M	FLAT WASHER 6MM
106	P0663106	ELEVATING NUT RH
107	P0663107	COLUMN
108	P0663108	ELEVATING SCREW LH
109	P0663109	ELEVATING SCREW RH
110	PSB50M	CAP SCREW M5-.8 X 10
111	P0663111	GUIDE
112	P0663112	PLATEN
113	PB08M	HEX BOLT M6-1 X 20
114	PN01M	HEX NUT M6-1
115	PN09M	HEX NUT M12-1.75
116	P0663116	BASE
117	P6000	BALL BEARING 6000ZZ
118	P0663118	LOWER BEARING RETAINER

REF	PART #	DESCRIPTION
120	P0663120	SPACER
121	P0663121	GEAR
122	PW05M	FLAT WASHER 4MM
123	PLW02M	LOCK WASHER 4MM
124	PSBS26M	BUTTON HD CAP SCR M4-.7 X 12
125	P0663125	INFEED/OUTFEED TABLE
127	PS17M	PHLP HD SCR M4-.7 X 6
128	PSB02M	CAP SCREW M6-1 X 20
129	P0663129	TABLE BUSHING
130	PW03M	FLAT WASHER 6MM
131	P0663131	TABLE SUPPORT
132	P0663132	SHAFT SUPPORT
133	PSB33M	CAP SCREW M5-.8 X 12
134	P0663134	SHAFT
135	PR01M	EXT RETAINING RING 10MM
136	P0663136	GEAR
137	P0663137	SCALE
138	P0663138	SIDE COVER



Warning Labels Breakdown and List



REF	PART #	DESCRIPTION
201	P0663201	HANDLE NOTICE LABEL
202	P0663202	MACHINE ID LABEL
203	P0663203	HANDLE TURN LABEL
204	P0663204	MACHINE NUMBER LABEL
205	PLABEL-14	ELECTRICITY LABEL
206	P0663206	HEARING LOSS LABEL

REF	PART #	DESCRIPTION
207	P0663207	EYE/LUNG INJURY LABEL
208	P0663208	READ MANUAL LABEL
209	P0663209	GRIZZLY LABEL
210	P0663210	DO NOT REMOVE COVER LABEL
211	P0663211	DISCONNECT POWER LABEL

WARNING

Safety labels warn about machine hazards and ways to prevent injury. The owner of this machine **MUST** maintain the original location and readability of the labels on the machine. If any label is removed or becomes unreadable, **REPLACE** that label before using the machine again. Contact Grizzly at (800) 523-4777 or www.grizzly.com to order new labels.

