



MODEL T10116 AUXILIARY TABLE FOR MODEL G0563/G0564 INSTRUCTIONS

The Model T10116 auxiliary table replaces the spindle sanding table included with the Model G0563/G0564 oscillating edge sander, and improves dust collection when workpieces are sanded on the spindle drum or end of the sanding belt.

Inventory (Figure 1)

A.	Auxiliary Table.....	1
B.	Table Insert 4¼" (Preinstalled).....	1
C.	Table Insert 3¼".....	1
D.	Table Insert 2¼".....	1
E.	Table Insert 1¾".....	1

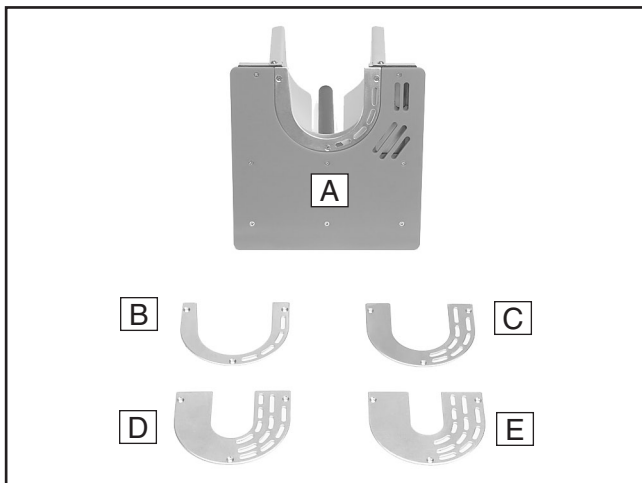


Figure 1. Model T10116.

If you need help with your new auxiliary table, call our Tech Support at: (570) 546-9663.

Assembly

1. Loosen the lock handle on the idler roller bracket and slide the existing spindle sanding table out.

2. Determine whether you will sand the workpiece on the end of the main sanding belt or on one of the spindle drums.

—If you plan to sand the workpiece on the end of the belt, leave the preinstalled 4¼" table insert installed in the auxiliary table, and proceed to **Step 3**.

—If you plan to sand the workpiece on one of the spindle drums, remove the Phillips head screws (see **Figure 2**) and the 4¼" insert. Measure the diameter of the spindle drum installed on the sander. Insert the correct sized insert into the auxiliary table, secure with the Phillips head screws, then proceed to **Step 3**.

Note: The 1¾", 2¼", and 3¼" table inserts only fit the spindle drum—they will not fit over the main sanding belt and idler roller.

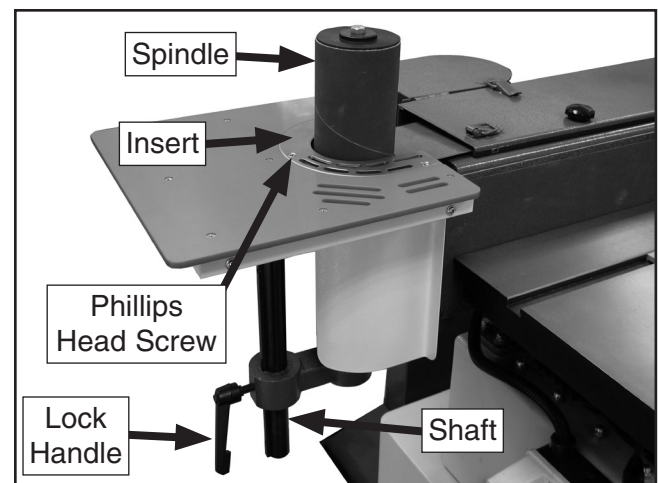


Figure 2. Model T10116 installed.

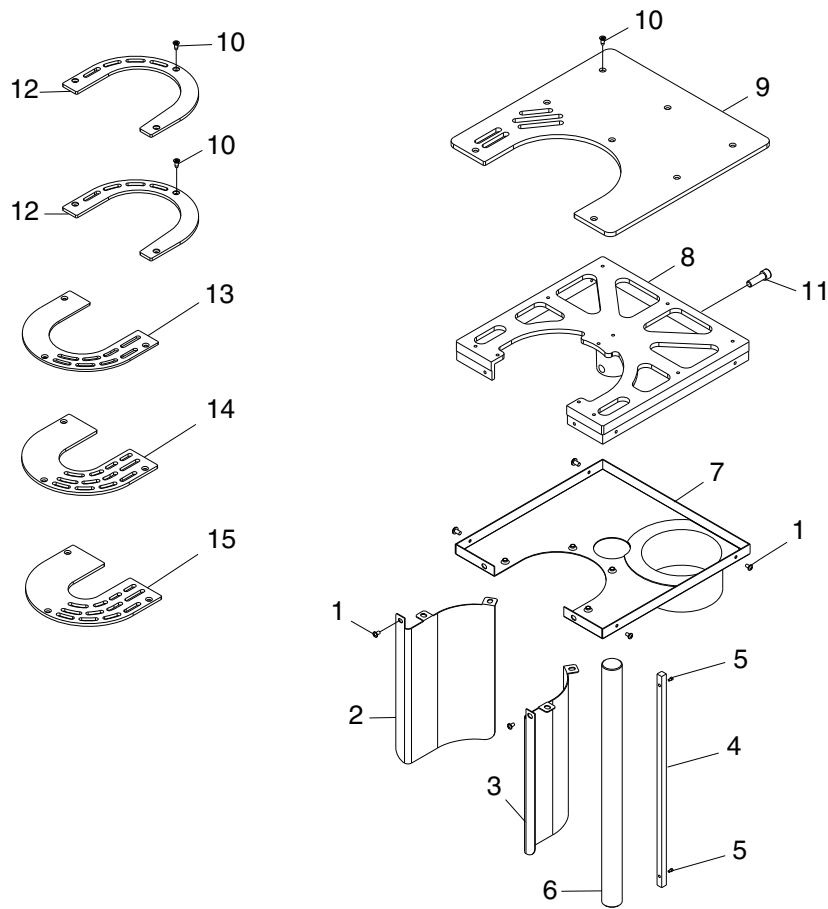
3. Slide the Model T10116 auxiliary table shaft into the opening in the idler roller bracket (see **Figure 2**).
4. Adjust the auxiliary table height to the sanding belt or spindle—depending upon which size insert is installed, then tighten the lock handle.

! WARNING

A gap is created between the 4¼" insert and the spindle sanding drum. To reduce the risk of fingers getting pinched in this gap, DO NOT sand workpieces on the spindle drum with the 4¼" insert! ONLY sand workpieces on the main belt with the 4¼" insert.

5. Fit a 4" dust hose over the dust port and secure it in place with a hose clamp.

T10116 Parts Breakdown and List



REF	PART #	DESCRIPTION
1	PFS03	FLANGE SCREW 10-24 X 3/8
2	PT10116002	TABLE COVER U-TYPE (R)
3	PT10116003	TABLE COVER U-TYPE (L)
4	PT10116004	KEY 5/16 X 5/16 X 12-3/8
5	PSB17M	CAP SCREW M4-.7 x 10
6	PT10116006	TABLE SPINDLE U-TYPE
7	PT10116007	DUST COLLECTOR COVER
8	PT10116008	CAST IRON TABLE U-TYPE

REF	PART #	DESCRIPTION
9	PT10116009	TABLE TOP
10	PFH01	FLAT HD SCR 10-24 X 3/8
11	PSB16	CAP SCREW 3/8-16 X 3/4
12	PT10116012	TABLE INSERT 4-1/4"
13	PT10116013	TABLE INSERT 3-1/4"
14	PT10116014	TABLE INSERT 2-1/4"
15	PT10116015	TABLE INSERT 1-3/4"

