



MODEL H7979 COMPOUND SLIDE TABLE INSTRUCTION SHEET

Introduction

The Model H7979 compound slide table two-axis positioning can be used for inspection and layout jobs, as well as for boring, drilling, grinding, and milling operations. Dials are graduated in 0.001" and two T-slots are $\frac{5}{8}$ " x 1". Dovetailed slides have adjustable steel gibs to compensate for wear. Weight is 35 lbs.

Inventory (Figure 2)

- A. Compound Slide Table..... 1
- B. Handwheel Handles 2
- C. Hex Wrenches 2, 2.5, & 3mm
(not shown)..... 1 ea.

Setup and Operation

1. Secure the compound slide table by bolting both sides of the base to your machine.
 2. Adjust the gib screws by loosening the lock nuts and turning the screws. The table should slide freely without sloppiness and without binding. Tighten the lock nuts when adjustment is complete.
- The table can be locked in place by tightening one of the gib screws down.
 - Dials can be zeroed by loosening the set screws.

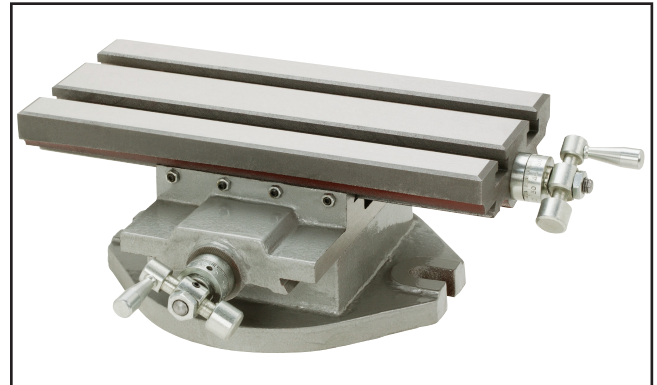


Figure 1. Model H7979.

Lubrication

1. Keep the compound slide in good working order by lubricating all moving parts frequently with general purpose oil.
2. Keep a thin layer of general purpose oil on the table and other non-painted surfaces when not in use to help prevent rust.

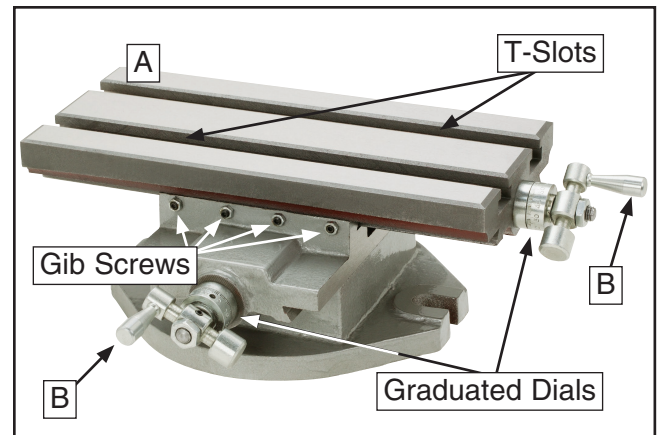
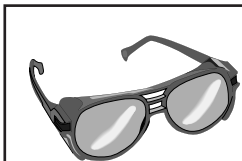


Figure 2. Inventory and features.

If you need help with your new compound slide table, call our Tech Support at: (570) 546-9663.



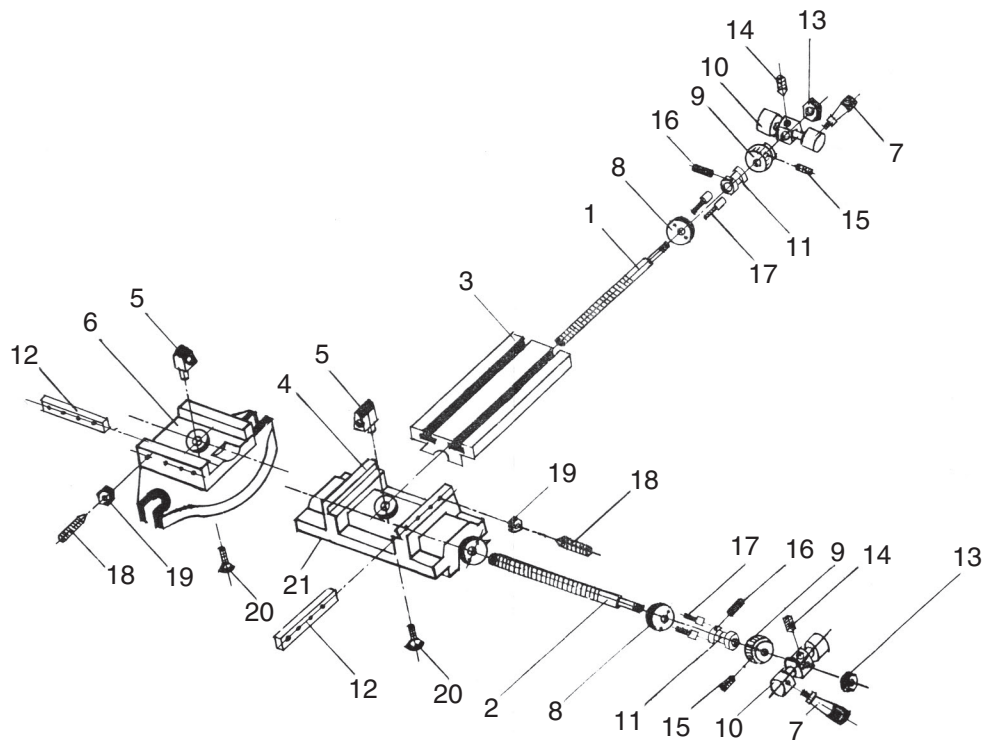
WARNING
Wear safety glasses during the entire setup and operation process!

COPYRIGHT © JULY, 2006 BY GRIZZLY INDUSTRIAL, INC.

WARNING: NO PORTION OF THIS MANUAL MAY BE REPRODUCED IN ANY SHAPE OR FORM WITHOUT THE WRITTEN APPROVAL OF GRIZZLY INDUSTRIAL, INC.

#PC8405 PRINTED IN CHINA

H7979 Parts Breakdown and List



REF	PART #	DESCRIPTION
1	PH7979001	LONGITUDINAL GUIDE SCREW
2	PH7979002	CROSS FEED GUIDE SCREW
3	PH7979003	WORKING TABLE
4	PH7979004	SLIDE CARRIAGE
5	PH7979005	SCREW NUT
6	PH7979006	BASE
7	PH7979007	HANDLE
8	PH7979008	COUPLING FLANGE
9	PH7979009	VERNIER DIAL
10	PH7979010	ROCKER
11	PH7979011	BUSHING

REF	PART #	DESCRIPTION
12	PH7979012	GIB
13	PH7979013	MICRO COLLAR NUT
14	PH7979014	MICRO COLLAR SCREW
15	PH7979015	VERNIER SCREW
16	PH7979016	MICRO COLLAR SHAFT SCREW
17	PH7979017	COLLAR SCREW
18	PH7979018	GIB HOLDER SCREW
19	PH7979019	GIB HOLDER NUT
20	PH7979020	HALF NUT SCREW
21	PH7979021	CROSS FEED BASE