



MODEL H2870 6-TON HYDRAULIC PRESS INSTRUCTIONS

For questions or help with this product contact Tech Support at (570) 546-9663 or techsupport@grizzly.com



WARNING
Eye injury hazard! Always wear safety glasses when using this machine.

WARNING
This shop press is not a toy. DO NOT allow children to use this press. Serious injury may occur if this press is used incorrectly.

CAUTION
Off-center loads can cause parts to be ejected unexpectedly, striking operator or bystanders with great force. STOP and release compression if workpiece tilts or binds during compression.



Figure 1. Model H2870.

Needed For Setup

Description	Qty
Additional People	1
Safety Glasses	1 Ea
Open-End Wrenches 13, 16, 18, 19mm	1 Ea

Assembly

Use parts breakdown and list on following page (with corresponding parts numbers included in parenthesis below) for guidance while completing each step.

To assemble press:

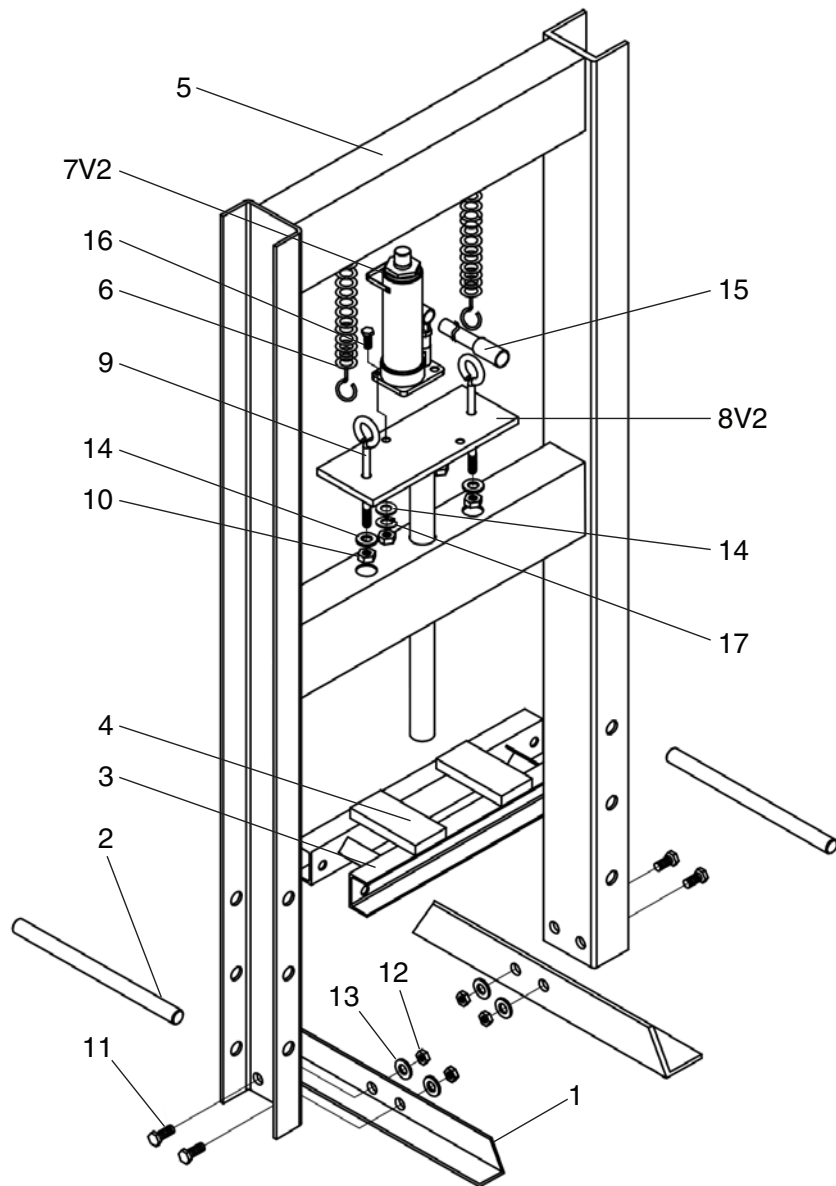
1. Use (4) M10-1.5 x 30 hex bolts, 10mm flat washers, and M10-1.25 hex nuts to assemble base supports (#1) to press frame (#5). Have a helper hold press frame in upright position until base supports are securely fastened.
2. Align holes in press bed platform (#3) with highest set of holes in press frame (#5), and insert support pins (#2) through aligned holes of bed and frame.
3. Install two eye bolts (#9) into press plate (#8V2), and secure each eye bolt with an 8mm flat washer and M8-1.25 hex nut.
4. Hook each spring to mounting holes on underside of frame top.
5. Carefully slide press plate shaft (#8V2) through frame cross brace, and attach springs to eye bolts.
6. Fit top of bottle jack (#7V2) into recess on underside of frame top (#5).
7. Mount base of jack to top of press plate (#8V2) using (2) M8-1.25 x 25 hex bolts, 8mm flat washers, 8mm lock washers, and M8-1.25 hex nuts. Slide jack handle (#15) into bottle jack sleeve.
8. Lay press blocks (#4) across press bed platform (#3). The hydraulic press is now ready for use.

COPYRIGHT © OCTOBER, 2001 BY GRIZZLY INDUSTRIAL, INC., REVISED AUGUST, 2014 (WK)

NO PORTION OF THIS MANUAL MAY BE REPRODUCED IN ANY SHAPE OR FORM WITHOUT THE WRITTEN APPROVAL OF GRIZZLY INDUSTRIAL, INC.

#WK3825 PRINTED IN CHINA

H2870 Parts Breakdown and List



REF	PART #	DESCRIPTION
1	PH2870001	BASE SUPPORT
2	PH2870002	SUPPORT PIN
3	PH2870003	PRESS BED PLATFORM
4	PH2870004	PRESS BLOCKS
5	PH2870005	FRAME
6	PH2870006	EXTENSION SPRING
7V2	PH2870007V2	BOTTLE JACK V2.05.14
8V2	PH2870008V2	PRESS PLATE V2.05.14
9	PH2870009	EYE BOLT M8-1.25 X 20

REF	PART #	DESCRIPTION
10	PH2870010	HEX NUT M8-1.25
11	PH2870011	HEX BOLT M10-1.5 X 30
12	PH2870012	HEX NUT M10-1.5
13	PH2870013	FLAT WASHER 10MM
14	PH2870014	FLAT WASHER 8MM
15	PH2870015	JACK HANDLE
16	PH2870016	HEX BOLT M8-1.25 X 25
17	PH2870017	LOCK WASHER 8MM

Please Note: We do our best to stock replacement parts whenever possible, but we cannot guarantee that all parts shown here are available for purchase. Call (800) 523-4777 or visit our online parts store at www.grizzly.com to check for availability.

